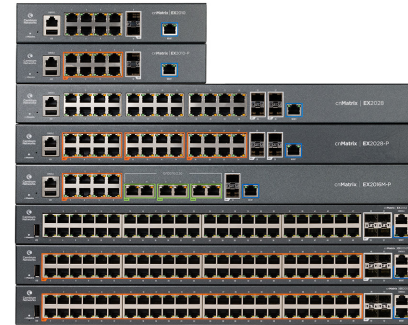


cnMatrix™ Switches, Accessories & Compatibility



1 cnMatrix Switches

1.1 Available Outside the US:

Model	Part #	Description
cnMatrix EX1010-P	MX-EX1010PxA-0	cnMatrix EX1010-P, Intelligent Ethernet PoE+ Switch, 8 1-Gbps and 2 1-Gbps SFP fiber ports - no pwr cord
cnMatrix EX1010	MX-EX1010xxA-0	cnMatrix EX1010, Intelligent Ethernet Switch, 8 1-Gbps and 2 1-Gbps SFP fiber ports - no pwr cord
cnMatrix EX1028-P	MX-EX1028PxA-0	cnMatrix EX1028-P, Intelligent Ethernet PoE+ Switch, 24 1-Gbps and 4 1-Gbps SFP fiber ports - no pwr cord
cnMatrix EX1028	MX-EX1028xxA-0	cnMatrix EX1028, Intelligent Ethernet Switch, 24 1-Gbps and 4 1-Gbps SFP fiber ports - no pwr cord
cnMatrix EX1010-P	MX-EX1010PxA-E	cnMatrix EX1010-P, Intelligent Ethernet PoE+ Switch, 8 1-Gbps and 2 1-Gbps SFP fiber ports - no pwr cord - EMEA Only
cnMatrix EX1010	MX-EX1010xxA-E	cnMatrix EX1010, Intelligent Ethernet Switch, 8 1-Gbps and 2 1-Gbps SFP fiber ports - no pwr cord - EMEA Only
cnMatrix EX1028-P	MX-EX1028PxA-E	cnMatrix EX1028-P, Intelligent Ethernet PoE+ Switch, 24 1-Gbps and 4 1-Gbps SFP fiber ports - no pwr cord - EMEA Only
cnMatrix EX1028	MX-EX1028xxA-E	cnMatrix EX1028, Intelligent Ethernet Switch, 24 1-Gbps and 4 1-Gbps SFP fiber ports - no pwr cord - EMEA Only
cnMatrix EX2016M-P	MXEX2016MxPA00	cnMatrix EX2016M-P, Intelligent Ethernet PoE Switch, 8x1G+6x2.5G+2xSFP+, no pwr cord
cnMatrix EX2052-P	MXEX2052GxPA00	cnMatrix EX2052-P, Intelligent Ethernet PoE Switch, 48 1G and 4 SFP+ Fixed 540 - no pwr cord
cnMatrix EX2052R-P	MXEX2052GxPA10	cnMatrix EX2052R-P, Intelligent Ethernet PoE Switch, 48 1G and 4 SFP+, Removeable Power Supply (not included) - no pwr cord
cnMatrix EX2052	MXEX2052GxxA00	cnMatrix EX2052, Intelligent Ethernet Switch, 48 1G and 4 SFP+ - no pwr cord
cnMatrix EX2010-P	MX-EX2010PxA-0	cnMatrix EX2010-P, Intelligent Ethernet PoE Switch, 8 1G and 2 SFP fiber ports - no pwr cord
cnMatrix EX2010	MX-EX2010xxA-0	cnMatrix EX2010, Intelligent Ethernet Switch, 8 1G and 2 SFP fiber ports - no pwr cord
cnMatrix EX2028-P	MX-EX2028PxA-0	cnMatrix EX2028-P, Intelligent Ethernet PoE Switch, 24 1G and 4 SFP+ fiber ports - no pwr cord
cnMatrix EX2028	MX-EX2028xxA-0	cnMatrix EX2028, Intelligent Ethernet Switch, 24 1G and 4 SFP+ fiber ports - no pwr cord
TX1012-P-AC	MXTX1012GxPA00	cnMatrix TX1012-P-AC, AC Powered Intelligent Ethernet PoE Switch, 8 x 1Gbps, and 4 SFP+, no pwr cord
TX1012-P-DC	MXTX1012GxPA20	cnMatrix TX1012-P-DC, DC Powered Intelligent Ethernet PoE Switch, 8 x 1Gbps, and 4 SFP+, no pwr cord
TX2012R-P	MXTX2012GxPA10	cnMatrix TX 2012R-P, Intelligent Ethernet PoE Switch, Cambium Sync, 8 x 1gbps, and 4 SFP+, Removeable Power Supply (not included) - no pwr cord
TX2020R-P	MXTX2020GxPA10	cnMatrix TX 2020R-P, Intelligent Ethernet PoE Switch, Cambium Sync, 16 x 1gbps and 4 SFP+, Removeable & Redundant Power Supplies (not included) - no pwr cord
TX2028RF-P	MXTX2028GFPA10	cnMatrix TX 2028RF-P, Intelligent Ethernet PoE Switch, Cambium Sync, 16 x 1gbps, 8 x SFP, and 4 SFP+, Removeable Power Supply (not included) - no pwr cord

1.2 US Part Numbers

Model	Part #	Description
cnMatrix EX1010-P	MX-EX1010PxA-1	cnMatrix EX1010-P, Intelligent Ethernet PoE+ Switch, 8 1-Gbps and 2 1-Gbps SFP fiber ports - no pwr cord, USA Only
cnMatrix EX1010	MX-EX1010xxA-1	cnMatrix EX1010, Intelligent Ethernet Switch, 8 1-Gbps and 2 1-Gbps SFP fiber ports - no pwr cord, USA Only
cnMatrix EX1028-P	MX-EX1028PxA-1	cnMatrix EX1028-P, Intelligent Ethernet PoE+ Switch, 24 1-Gbps and 4 1-Gbps SFP fiber ports - no pwr cord, USA Only
cnMatrix EX1028	MX-EX1028xxA-1	cnMatrix EX1028, Intelligent Ethernet Switch, 24 1-Gbps and 4 1-Gbps SFP fiber ports - no pwr cord, USA Only
cnMatrix EX2016M-P	MXEX2016MxPA01	cnMatrix EX2016M-P, Intelligent Ethernet PoE Switch, 8x1G+6x2.5G+2xSFP+, no pwr cord, USA Only
cnMatrix EX2052-P	MXEX2052GxPA01	cnMatrix EX2052-P, Intelligent Ethernet PoE Switch, 48 1G and 4 SFP+ Fixed 540 - no pwr cord, USA Only
cnMatrix EX2052R-P	MXEX2052GxPA11	cnMatrix EX2052R-P, Intelligent Ethernet PoE Switch, 48 1G and 4 SFP+, Removeable Power Supply (not included) - no pwr cord, USA Only
cnMatrix EX2052	MXEX2052GxxA01	cnMatrix EX2052, Intelligent Ethernet Switch, 48 1G and 4 SFP+ - no pwr cord, USA Only
cnMatrix EX2010-P	MX-EX2010PxA-U	cnMatrix EX2010-P, Intelligent Ethernet PoE Switch, 8 1G and 2 SFP fiber ports - USA pwr cord
cnMatrix EX2010	MX-EX2010xxA-U	cnMatrix EX2010, Intelligent Ethernet Switch, 8 1G and 2 SFP fiber ports - USA pwr cord
cnMatrix EX2028-P	MX-EX2028PxA-U	cnMatrix EX2028-P, Intelligent Ethernet PoE Switch, 24 1G and 4 SFP+ fiber ports - USA pwr cord
cnMatrix EX2028	MX-EX2028xxA-U	cnMatrix EX2028, Intelligent Ethernet Switch, 24 1G and 4 SFP+ fiber ports - USA pwr cord
TX1012-P-AC	MXTX1012GxPA01	cnMatrix TX1012-P-AC, AC Powered Intelligent Ethernet PoE Switch, 8 x 1Gbps, and 4 SFP+, no pwr cord, USA Only
TX1012-P-DC	MXTX1012GxPA21	cnMatrix TX1012-P-DC, DC Powered Intelligent Ethernet PoE Switch, 8 x 1Gbps, and 4 SFP+, no pwr cord, USA Only
TX2012R-P	MXTX2012GxPA11	cnMatrix TX 2012R-P, Intelligent Ethernet PoE Switch, Cambium Sync, 8 x 1gbps, and 4 SFP+, Removeable Power Supply (not included) - no pwr cord, USA Only
TX2020R-P	MXTX2020GxPA11	cnMatrix TX 2020R-P, Intelligent Ethernet PoE Switch, Cambium Sync, 16 x 1gbps and 4 SFP+, Removeable & Redundant Power Supplies (not included) - no pwr cord, USA Only
TX2028RF-P	MXTX2028GFPA11	cnMatrix TX 2028RF-P, Intelligent Ethernet PoE Switch, Cambium Sync, 16 x 1gbps, 8 x SFP, and 4 SFP+, Removeable Power Supply (not included) - no pwr cord, USA Only

2 cnMatrix Accessories

Part #	Description
MX-Rack-TX2K-0	cnMatrix 19" Rack mount kit: TX2012R-P
N000900L030A	ePMP External GPS Antenna
N000900L092A	AC line cord, US Type B, 15A, 1.2m C13 connector
SFP-10G-Copper	10G Base-T (RJ45) SFP Transceiver. 0C to 70C
SFP-10G-LR	10G SFP+ SMF LR Transceiver, 1310nm. -40C to 85C
SFP-10G-SR	10G SFP+ MMF SR Transceiver, 850nm. -40C to 85C
SFP-1G-Copper	1000Base-T (RJ45) SFP Transceiver. -40C to 85C
SFP-1G-LX	1G SFP SMF LX Transceiver, 1310nm. -40C to 85C
SFP-1G-SX	1G SFP MMF SX Transceiver, 850nm. -40C to 85C

AC Line Cord SKU	Description
N000900L040A	AC line cord, US Type B, 1.2m C13 connector
N000900L092A	AC line cord, US Type B, 15A, 1.2m C13 connector
N000900L045A	AC line cord, UK Type G angled, 1.2m C13 connector
N000900L043A	AC line cord, IN Type D angled, 1.2m C13 connector
N000900L041A	AC line cord, EU Type F angled, 1.2m C13 connector
N000900L042A	AC line cord, ANZ Type I, 1.2m C13 connector
N000900L046A	AC line cord, CN Type I angled, 1.2m C13 connector
N000900L044A	AC line cord, BR Type N, 1.2m C13 connector
N000900L093A	AC line cord, BR Type N, 15A, 1.2m C13 connector
N000900L047A	AC line cord, AR Type I, 1.2m C13 connector
N000900L041A	AC line cord, EU Type F angled, 1.2m C13 connector
N000900L041A	AC line cord, EU Type F angled, 1.2m C13 connector
N000900L041A	AC line cord, EU Type F angled, 1.2m C13 connector
N000900L041A	AC line cord, EU Type F angled, 1.2m C13 connector
N000900L048A	AC line cord, ZA Type M angled, 0.72m C13 connector
N000900L042A	AC line cord, ANZ Type I, 1.2m C13 connector

3 Accessory Compatibility

3.1 Compatibility for Power Cords

Country/Region	Input Voltage	Switches with Internal Power supplies	CRPS AC - 600	CRPS AC - 930	CRPS AC - 1200
US	110V	N000900L040A	N000900L040A	N000900L092A	N000900L092A
US	220V				
UK	220V	N000900L045A	N000900L045A	N000900L045A	N000900L045A
India	220V	N000900L043A	N000900L043A	N000900L043A	N000900L043A
EU	220V	N000900L041A	N000900L041A	N000900L041A	N000900L041A
AUS	220V	N000900L042A	N000900L042A	N000900L042A	N000900L042A
China	220V	N000900L046A	N000900L046A	N000900L046A	N000900L046A
Brazil	110V	N000900L044A	N000900L044A		
Brazil	220V	N000900L044A	N000900L044A	N000900L044A	N000900L044A
Argentina	220V	N000900L047A	N000900L047A	N000900L047A	N000900L047A

3.2 Compatibility for Transceivers

	Transceiver Part Numbers					
	SFP-1G-SX	SFP-1G-LX	SFP-1G-Copper	SFP-10G-SR	SFP-10G-LR	SFP-10G-Copper
EX1010	Yes	Yes	Yes	No	No	No
EX1010-P	Yes	Yes	Yes	No	No	No
EX1028	Yes	Yes	Yes	No	No	No
EX1028-P	Yes	Yes	Yes	No	No	No
EX2010	Yes	Yes	Yes	No	No	No
EX2010-P	Yes	Yes	Yes	No	No	No
EX2028	Yes	Yes	Yes	yes	yes	yes
EX2028-P	Yes	Yes	Yes	Yes	Yes	Yes
EX2016M-P	Yes	Yes	Yes	Yes	Yes	Yes
EX2052	Yes	Yes	Yes	Yes	Yes	Yes
EX2052-P	Yes	Yes	Yes	Yes	Yes	Yes
EX2052R-P	Yes	Yes	Yes	Yes	Yes	Yes
TX2012R-P	Yes	Yes	Yes	Yes	Yes	Yes
TX2020R-P	Yes	Yes	Yes	Yes	Yes	Yes
TX2028R-P	Yes	Yes	Yes	Yes	Yes	Yes
TX1012-P-AC	Yes	Yes	Yes	Yes	Yes	Yes
TX1012-P-DC	Yes	Yes	Yes	Yes	Yes	Yes

3.3 Compatibility for Rack Mount Ears

Switch Model	Family	Port Configuration	Includes Rack Mount Ears	Part Number	Part Number	Part Number	Part Number	Part Number
				MX-EXTXHALFA-0	MX-EXTXFULLA-1	MX-Rack-TX2K-0	MX-Rack-TX1K-0	MX-DIN-TX1K-0
cnMatrix EX1010	Enterprise	8 Port non PoE	No	19" Rack	Wall	NA	NA	
cnMatrix EX1010-P	Enterprise	8 Port PoE	No	19" Rack	Wall	NA	NA	
cnMatrix EX1028	Enterprise	24 Port non PoE	Yes	NA	19" Rack or Wall	NA	NA	
cnMatrix EX1028-P	Enterprise	24 Port PoE	Yes	NA	19" Rack or Wall	NA	NA	
cnMatrix EX2010	Enterprise	8 Port non PoE	No	19" Rack	Wall	NA	NA	
cnMatrix EX2010-P	Enterprise	8 Port PoE	No	19" Rack	Wall	NA	NA	
cnMatrix EX2028	Enterprise	24 Port non PoE	Yes	NA	19" Rack or Wall	NA	NA	
cnMatrix EX2028-P	Enterprise	24 Port PoE	Yes	NA	19" Rack or Wall	NA	NA	
cnMatrix EX2016M-P	Enterprise	16 Port PoE - 6x2.5G	Yes	NA	19" Rack or Wall	NA	NA	
cnMatrix EX2052	Enterprise	48 Port Non PoE	Yes	NA	19" Rack or Wall	NA	NA	
cnMatrix EX2052-P	Enterprise	48 Port PoE - fixed 520	Yes	NA	19" Rack or Wall	NA	NA	
cnMatrix EX2052R-P	Enterprise	48 Port PoE - CRPS	Yes	NA	19" Rack or Wall	NA	NA	
cnMatrix TX2012R-P	Enterprise	8 Port PoE - CRPS	No	NA	Wall	19" Rack	NA	
cnMatrix TX2020R-P	Enterprise	16 Port PoE - CRPS	Yes	NA	19" Rack or Wall	NA	NA	
cnMatrix TX2028RF-P	Enterprise	16 Port PoE - CRPS	Yes	NA	19" Rack or Wall	NA	NA	
cnMatrix TX1012-P-AC	Enterprise	8 Port PoE - CRPS	No	NA	Wall	NA	19" Rack	DIN Rail Mount
cnMatrix TX1012-P-DC	Enterprise	8 Port PoE - CRPS	No	NA	Wall	NA	19" Rack	DIN Rail Mount

3.4 CRPS Data

Part #	Power Supply	Type (AC/DC)	DC - in Voltage	Available PoE Budget	High Temp Mode	Normal Mode
MXCRPSAC1200A0	1200W (110V)	AC	NA	900W	700W	900W
MXCRPSAC1200A0	1200W (220V)	AC	NA	960W	700W	960W
MXCRPSDC1200A0	1200W	DC	48-72V	960W	700W	960W
MXCRPSDC1200A0	1200W	DC	36-47V	740W	700W	740W
MXCRPSAC930A0	930W	AC	NA	840W	600W	840W
MXCRPSDC930A0	930W	DC	48-72V	840W	600W	840W
MXCRPSDC930A0	930W	DC	36-47V	740W	600W	740W
MXCRPSAC600A0	600W	AC	NA	500W	450W	500W
MXCRPSDC600A0	600W	DC	48-72V	500W	450W	500W
MXCRPSDC600A0	600W	DC	36-47V	500W	450W	500W

**High Temp Mode is an SW configurable parameter.*

ABOUT CAMBIUM NETWORKS

Cambium Networks delivers wireless communications that work for businesses, communities and cities worldwide. Millions of our radios are deployed to connect people, places and things with a unified wireless fabric that spans multiple standards and frequencies of fixed wireless and Wi-Fi, all managed centrally via the cloud. Our multi-gigabit wireless fabric offers a compelling value proposition over traditional fiber and alternative wireless solutions. We work with our Cambium certified ConnectedPartners to deliver purpose-built networks for service provider, enterprise, industrial, and government connectivity solutions in urban, suburban, and rural environments, with wireless that just works.

cambiumnetworks.com