

# NMS5

Product Leaflet



siae microelettronica

## NMS5 Network Management System

From large nation-wide networks to small/medium regional networks, the supervision and management of the installed base is fundamental for the operator to run its services.

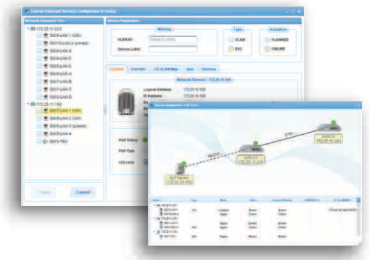
SIAE MICROELETTRONICA NMS5 network management offers immediate access to the network status, fast identification of alarms via friendly graphical interface, automated service provisioning and field proven Operations Support System (OSS) integration.



Napoli, Italy

# NETWORK MANAGEMENT SYSTEM

NMS5 is an advance network manager solution running on either UNIX or LINUX platforms. This flexibility allows both large network operators with tens or thousands of deployed Network Elements (NE) as well as smaller enterprices to benefit from a complete and exhaustive network supervision, while investing in the most adequate solution. Furthermore NMS5 also supports VMWare virtualized systems, for no investment in extra hardware, capitalizing on the existing infrastructure.



## MAIN FEATURES

- Friendly and intuitive front-end GUI
- High availability with geographical server redundancy
- End-to-End Ethernet and TDM service provisioning
- Advanced security management (SNMPv3, SFTP, SSH)
- Management of SNMP third party equipments
- Fault management with active and historical alarms and enhanced information
- Friendly performance monitoring report visualization
- Multi-user system supporting different client access applications
- Support of virtual architecture
- Modular architecture
- Automatic new network element discovery
- Report and log functionalities
- Additional web access through standard web-browser
- Support of different north bound interfaces ensuring seamless communication with higher layer systems
- 24h customers support



## EML Key Features

- Full FCAPS support
- Back-up and Restore
- HW and SW Inventory
- Schedules SW download

## NML Key Features

- Hierarchical geographical map representation
- Hierarchical view tree structure
- Map and tree network view restriction according to user profile

## SML Key Features

- E2E Ethernet services provisioning (E-Line, E-LAN and OAM)
- E2E TDM path provisioning
- E2E G.8032 ring service provisioning

## NBI Key Features

- SNMP proxy agent for alarm exporting
- SNMP proxy agent for alarm with 15min and 24h granularity
- Hardware and Software inventory export tools (CVS & XML file)
- E2E service provisioning through web service interfaces



MEMBER OF:  



COMPANY WITH  
QUALITY SYSTEM  
CERTIFIED BY DNV GL  
= ISO 9001:2015 =