

Tower Mount Outdoor Hybrid Enclosure

viaPhoton is constantly innovating to anticipate and meet all of your connectivity needs. The patented Outdoor Hybrid Enclosure (OHE) with Surge Protection is no exception. The engineered flip-tray mechanism offers dedicated fiber access, optical path testing becomes easier, and maintenance becomes faster. The spring-loaded clip ensures smooth fiber travel and saves time when routing cable. The universal brackets allow the enclosure to be mounted to any horizontal or vertical structure.



Our Custom Engineered OHE Features

- Easy-access design for fast, on-site fiber and power installation
- NEMA 4X rating for harsh environment protection
- IEC Class 1 Surge Protection Device (SPD) for DC-powered RRH applications
- Uptime preserved in rare instance of SPD failure; RRH units remain powered
- Gland sizes for range of cable diameters (5 mm - 44 mm)

Outdoor Hybrid Enclosure with Overvoltage Protection

Specifications



shown:
patented
flip-up tray

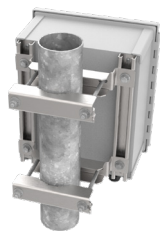
MODEL NUMBER	OHE-xx-xSPD-Gx	OHE-xx-xSPD-M-Gx
Dimensions (ext.)	15.5 in H x 13.6 in W x 7.72 in D	16.7 in H x 15.5 in W x 7.72 in D
Weight	24 lbs.	35 lbs.
Radios Supported	up to 6	up to 9
Fibers	36 max (18 duplex)	36 max (18 duplex)
DC conductors	12C (6 pair) 6-14 AWG	18C (9 pair) 6-14 AWG
Surge Protection, Class I / Type 1	up to 6 circuits	up to 9 circuits
Cable Gland Seal	custom configuration for cable diameters 5 mm - 44 mm	
Wind Load	150 mph (sustained): 85.72 lb (381.3N) 195 mph (sustained): 144.86 lb (644.5N)	150 mph (sustained): 113.15 lb (503.3N) 195 mph (sustained): 191.23 lb (850.6N)



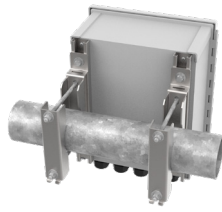
enclosure latches



outdoor enclosure



vertical mount



horizontal mount



custom
gland sealing



banded option

STANDARD FEATURES

Fiber Type	multi-mode or single-mode
DC Termination	screw activated with metal plate clamping
Security	stainless steel latch with padlock clasp
Outdoor Temp. Range	-40°C to +80°C
Environmental, Sealing	NEMA 4X
Cable Entry	gland seal
Tower Mount	universal stainless steel mount horizontal or vertical pipe, 2 - 4.5 in OD with mounting and banding capabilities
Protection Class	Class I / Type 1
Voltage Protection Rating	400 V (UL 1449)
Nominal Operating Voltage	48 VDC
Max Continuous Operating Voltage	100 VDC
Nominal Discharge Current	20kA
Max Surge Current	65kA
Response Time	≤25 nanoseconds